



Y815B2-DMH

Broadband 2-bayed Yagi array antenna

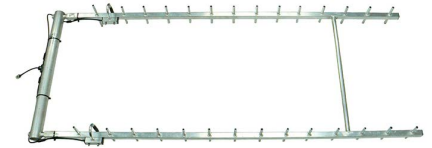
Mobile Phone or UHF 700-960 MHz



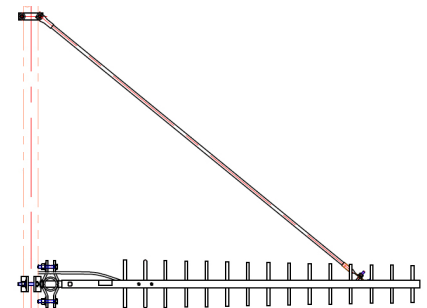
The Y815B2-DMH series are either 2 or 4 Yagi arrays which produces a highly directional radiation pattern with high front-to-back ratio specifically designed for long distance point-to-point communication links.

Please note: Vertically polarised Yagi, horizontally bayed

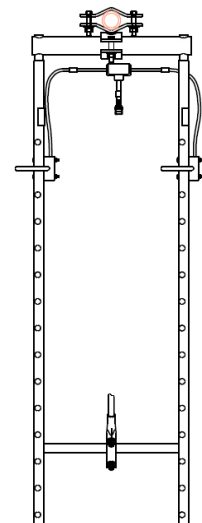
Coaxial feeder cable, connectors and other installation accessories are all available separately.



Construction	Fully-welded aluminium yagi's and supports
Frequency range	700-960 MHz - LTE, 4G/3G & UHF compatible
Bandwidth	Specify any 60 MHz within band when ordering
VSWR	<1.5:1 across specified bandwidth
Tuning	Factory
Yagi's in array	2 x 15 element Yagi's
Gain - nominal	17 dBd
Polarisation	Vertical polarised Yagi's, horizontally mounted - bayed
Maximum power	100 Watts
Impedance	50 Ohms
H Plane	14°
E Plane	28°
Front-to-back	18 dB
Cable	2-way RG59 phasing harness - supplied
Connector	N-type female fitted to phasing harness
Boom length	1.85 metres
Longest element	210mm
Array weight	6.1kg
Projected area	0.171m ²
Wind load at 160kph	0.203kN, 20.674kg
Mounting hardware supplied	1 x SRF-DM + UV1-SS - strut 1 x UAM90L - antenna mount



Y815B2-DMH 2 x 15 element Yagi array with drain holes down - side view



Y815B2-DMH series with drain holes down - top view



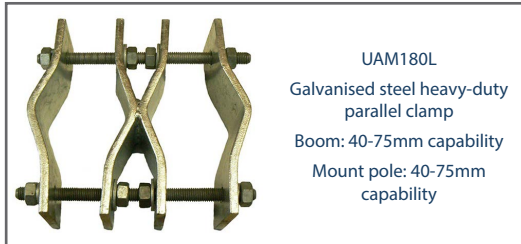
Y815B2-DMH

Broadband 2-bayed Yagi array antenna

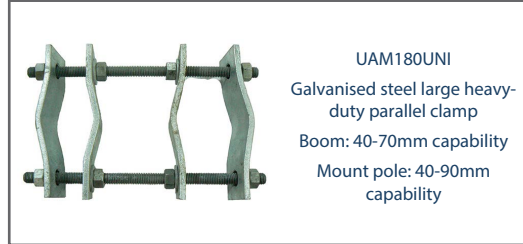
Mobile Phone or UHF 700-960 MHz



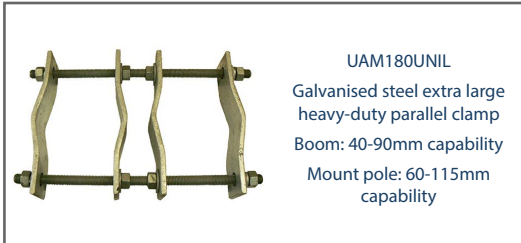
Alternate mounting hardware - order separate



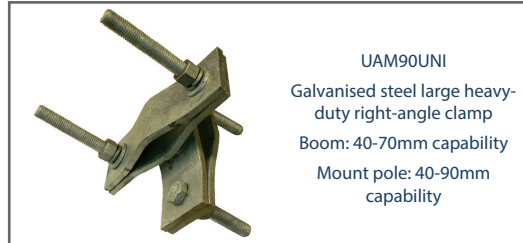
UAM180L
Galvanised steel heavy-duty parallel clamp
Boom: 40-75mm capability
Mount pole: 40-75mm capability



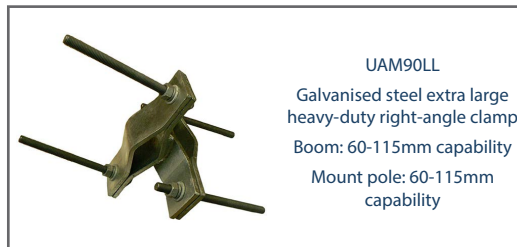
UAM180UNI
Galvanised steel large heavy-duty parallel clamp
Boom: 40-70mm capability
Mount pole: 40-90mm capability



UAM180UNIL
Galvanised steel extra large heavy-duty parallel clamp
Boom: 40-90mm capability
Mount pole: 60-115mm capability



UAM90UNI
Galvanised steel large heavy-duty right-angle clamp
Boom: 40-70mm capability
Mount pole: 40-90mm capability



UAM90LL
Galvanised steel extra large heavy-duty right-angle clamp
Boom: 60-115mm capability
Mount pole: 60-115mm capability

Suitable feeder coaxial cable and connectors



RU400 Solid copper conductor, low loss coaxial cable
CNT-400 / LMR-400™ equivalent
(* times microwave)
P/N 7890
Available in 100m, 300m or 500m rolls or alternatively request a custom cable assembly



N-type male crimp connector for RU400 low loss, solid conductor
P/N 8226
Tri-metal plated



RU600 solid copper conductor, low loss coaxial cable
CNT-600 / LMR-600™ equivalent
(* times microwave)
P/N 7890-3
Available in cut length, 500m roll or alternatively request a custom cable assembly



N-type male crimp connector for RU600 coaxial cable
P/N 8226-2
Tri-metal plated



1/2" corrugated shielding, foam dielectric coaxial cable
P/N ZCG1250
(also available in super flexible)
Available in per metre, 500m roll or alternatively request a custom cable assembly



N-type male clamp connector for 1/2" flexible, corrugated shielded, coaxial cable
P/N NM1250
Tri-metal plated



Y815B2-DMH

Broadband 2-bayed Yagi array antenna
Mobile Phone or UHF 700-960 MHz



Installation Drawing

